

# People. Forms. Swisspearl.





Myth.  
Eternity.

6

Natural.  
Consistent.  
Hand-made.

66

68 Material  
70 Manufactory  
74 Designer

Planters &  
Objects

16

- 18 Willy Guhl
- 19 Guhl Chair
- 20 Sponeck
- 21 Twista
- 22 Sumo
- 23 Spindel
- 24 Maia
- 26 Samurai
- 27 Hive
- 28 Ronco
- 29 Kolonna
- 30 Trash Cube
- 31 Birdy
- 32 Bonsai
- 33 Lausanne
- 34 Aladin
- 35 The Bench
- 36 Osaka
- 37 Kyoto
- 38 Sessanta
- 39 Trenta
- 40 Delta
- 41 Delta 25
- 42 Balconia
- 43 Biasca
- 44 Porto
- 45 Dune
- 46 Cheers
- 47 Geisha
- 48 Hocuspocus
- 49 Ecal
- 50 Alto
- 51 Saucer

Endlessly  
happy.

78

Contact

82

We also offer  
Customized.

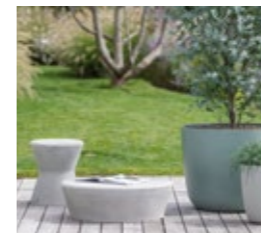
52

- 54 Custom Made
- 58 Custom Colours
- 59 Standard Colours
- 60 Indoor Greening
- 62 Plant Advice
- 64 Cleaning

6



16



52



66



78



**SWISSPEARL**


# Mythos

People have lived with nature since the beginning of time. We see the seasons, feel the elements, adorn ourselves with plants. And as it changes, we gain a sense of security in its ever recurring cycles.

We at Swisspearl want to continue this tradition. Our furniture, planters and objects for indoors and outdoors are made precisely for this purpose. Neither water, frost nor heat can harm them. Through all seasons, phases of life and the ever faster pace of living, they are quiet companions, providing peace and reliability.

# Eternity.





We shape.  
Natural, durable  
and made by hand.

With their durability, our planters and design objects create space for lasting memories and life, allowing nature to show all facets of its uniqueness and change. Durability does not mean standstill. Quite the opposite. It is just the thread running through history. Your very personal, individually shaped history.

Nature is part of our living space - for many, it is a place of refuge in our fast-paced times, providing a place for relaxation and healing on many different levels. However, how we like to experience our outside world is as varied as the plants that surround us.



Nature  
means life.





# Create a living space, for you and others.



Nothing is as unique and incomparable as nature itself and its power. Nature is life. No two leaves are alike, no two days are the same. When creating your garden, opt for native plants that offer wild bees, butterflies and insects valuable food and a place to retreat with their bouquet of flowers.



Many people want to live more sustainably - but in practice it often doesn't seem so easy. It is difficult for us to give up beloved habits or to limit ourselves. The first step, perhaps, is to see this change towards more sustainability not as "giving up" your usual lifestyle, but instead enriching it. Run your hands over products made of natural materials and enjoy the feel.

Products handmade with care offer a robustness and timeless aesthetic that we can enjoy for a long time to come. We don't need something new all the time: The first step, perhaps, is to see this change towards more sustainability not as "giving up" your usual lifestyle, but instead enriching it. This is sustainability in its most beautiful form.

Consistency  
in the hustle  
and bustle of  
change.



# Planters & Objects



# Willy Guhl as a visionary

Willy Guhl is one of the most important Swiss designers and can be considered a pioneer of modern industrial design. His interest in industrial manufacturing and new production methods brought him into contact with industry time and again - including us, the inventors of fibre cement. During our collaboration, numerous, outstanding designs were created, such as the Biasca plant container - also known as the "Elephant Ear" (page 43) - or the legendary "Loop Chair" beach chair from 1954, which is now one of the design icons of the 20th century.

Design by Willy Guhl

In 1954, the designer Willy Guhl created a design icon with a fibre cement panel joined to form an endless loop. The sculptural armchair, also known as the Loop Chair, impresses with its simplicity and classic elegance.

It is matched by the side table with two round openings that serve as bottle holders.

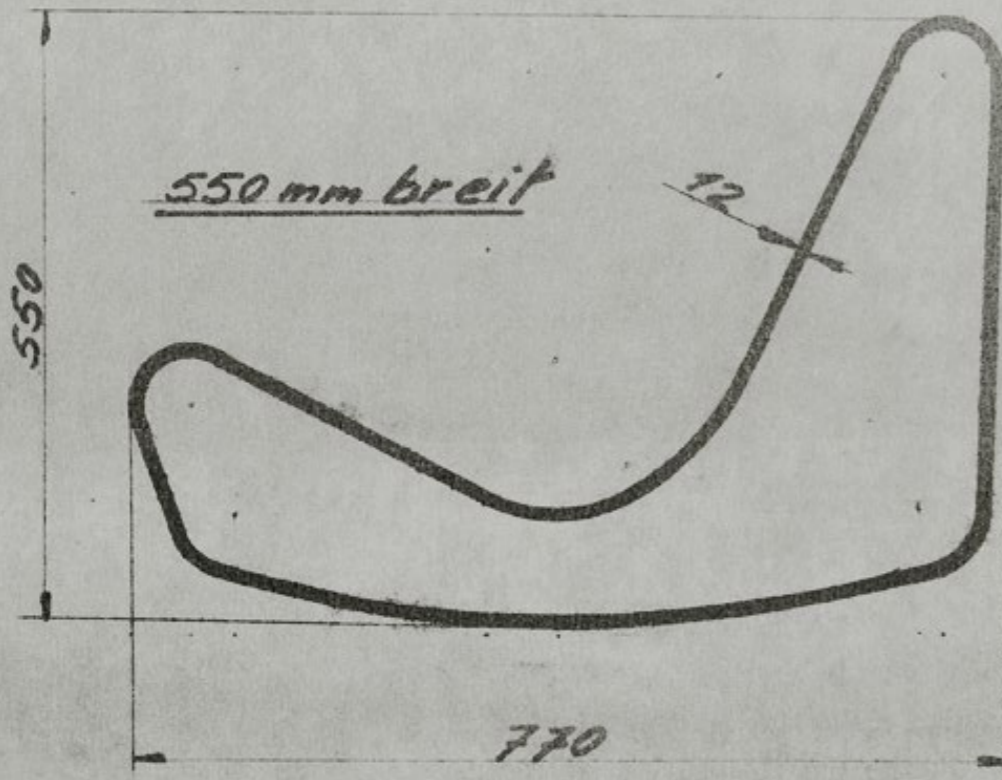
Chair

L 79cm x W 54cm x H 61cm

Table

L 72cm x W 40cm x H 22cm

Natural grey



While others were using fibre cement panels for architectural design, Guhl was fascinated by the malleability of the material, which had not yet dried out, with its low thickness and subsequent stability. With his first designs, he laid the foundation for today's Garden Collection.

# Guhl Chair

Design by Julia von Sponeck

What a combination. Designer Julia von Sponeck has abandoned the classic loop shape for the armchair and worked with two fibre cement panels lying on top of each other. This creates a dynamic, ergonomically sophisticated shape that is particularly comfortable to sit on. With the matching side table, the result is a beautifully shaped chair and table ensemble.

**Chair**

L 77.5cm x W 50cm x H 60cm

**Table**

L 50cm x W 50cm x H 25cm

Natural grey



Design by Martin Mostböck

Imagination sets accents. Honoured with the "Red Dot Design Award", Twista's slightly twisted design is a real eye-catcher in the most beautiful terraces and interiors.

L 60cm x W 30cm x H 60cm

Natural grey, Anthracite



Custom Colour



# Sponeck

# Twista

Design by Sternform

Sumo's belly-like shape gives roots plenty of space to grow.

Ø 49.2cm × H 40cm

Ø 56.2cm × H 50cm

Natural grey, Anthracite

Expression

Natural

Custom Colour



Design by ZHdK  
in cooperation with Willy Guh

Spindel, also known as the Diabolo, is simply masterful with its shape that tapers in the middle. This piece can be used as an iconic planter, or alternatively as an indoor sculpture. Available in two different sizes.

Ø 37cm × H 60cm

Ø 56cm × H 92cm

Natural grey

Custom Colour

# Sumo

# Spindel

Design by Michel Charlot

Maia dances to a different rhythm. The slightly wavy, playful surface creates a contrast to our other planters with smooth surfaces. Now also available in different sizes.

Ø 59cm x H 50cm

Ø 47cm x H 40cm

Natural grey, Anthracite

Expression

Natural

Custom Color



# Maia

Design by Michel Bruggmann

Samurai is a tall, slim planter that is perfect for deep-rooting plants such as roses and rosemary. Samurai planters make a particularly effective statement at the entrance of hotels and restaurants.

L 44cm × W 44cm × H 65cm

Natural grey, Anthracite

Expression

Natural

Custom Colour



Design by Martin Mostböck

Inspired by nature – a planter with an undulating shape that is reminiscent of beehives. With a height of 70cm and a diameter of 80cm, Hive offers even large plants enough space to unfold. Hive is available in natural grey and anthracite, but can be ordered in all RAL colours on request.

Ø 80cm × H 70cm

Natural grey, Anthracite

Custom Colour



# Samurai

# Hive

Design by Savioz Fabrizzi Architectes

With its Mediterranean look and soft shape, the Ronco range of containers creates an atmospheric ambience without being obtrusive. Thanks to the gentle bulge, Ronco offers enough space for large roots and is therefore the ideal planter for larger plants.

Ø 57.2 cm × H 44 cm

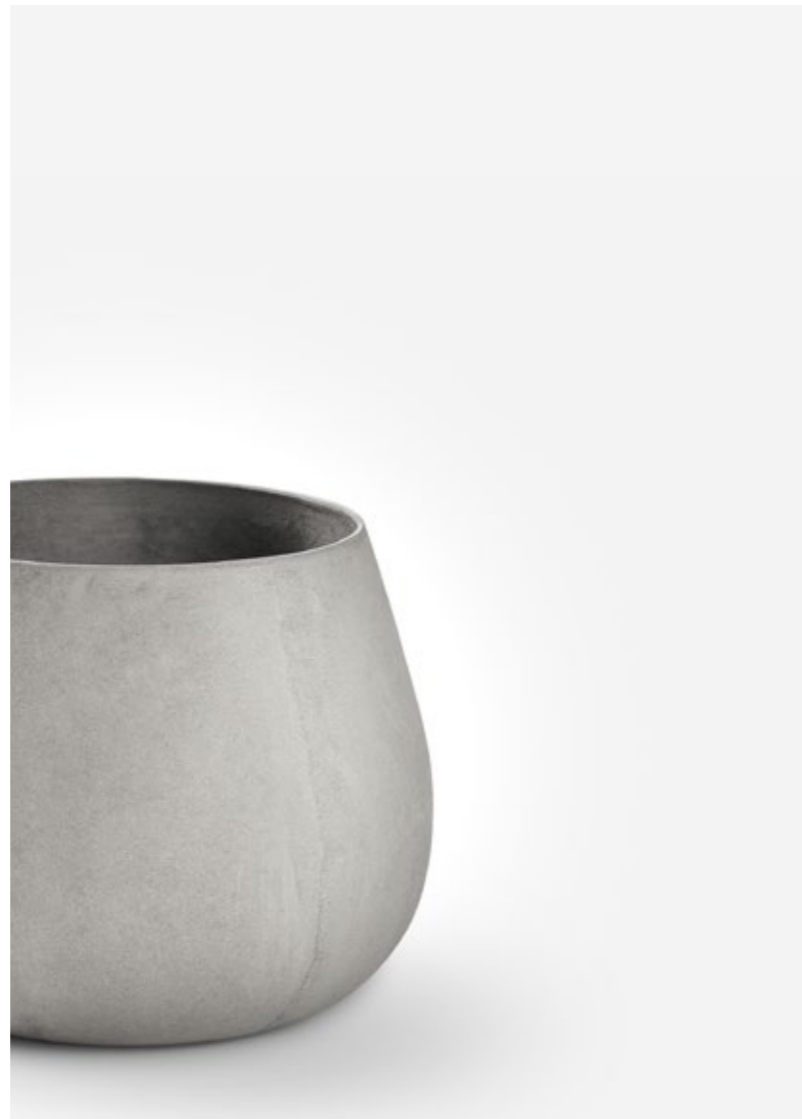
Ø 70.2 cm × H 54 cm

Natural grey, Anthracite

Expression

Natural

Custom Colour



Design by Martin Mostböck

Inspired by classical antiquity, this planter is a future classic. The slightly corrugated shape is a refreshing evolution of the classic circle, creating an exciting yet harmonious accent in your home. Winner of the Good Design Award 2019. Available in three different sizes.

Ø 61 cm × H 50 cm

Ø 61 cm × H 60 cm

Ø 78 cm × H 70 cm

Natural grey, Anthracite

Custom Colour



# Ronco

# Kolonna

Design by Nicolas le Moigne

Waste is generated at the Swisspearl factory during the production of various garden and design pieces. This waste finds a new life in the Trash Cube. Offcuts and leftover material are reshaped to form a stool or side table. The different pieces of waste used make each Trash Cube truly unique.

L 31cm x W 31cm x H 36cm

Natural grey



Design by Vladimir Jaccard

The Birdy nesting box can provide cavity-nesting birds a protected place to raise their young. Swisspearl fibre cement also provides the right conditions for this. It is not only weatherproof and waterproof, but also breathable and moisture-regulating.

L 20.5cm x W 16cm x H 21cm

Natural grey



# Trash Cube

# Birdy



Design by Patrick Schöni

Bonsai is a planter that is very large in diameter and elegantly showcases large plants and even smaller trees with its round, flat shape.

Ø 112cm × H 40cm

Ø 138cm × H 50cm

Ø 165cm × H 60cm

Natural grey, Anthracite

Custom Colour



Design by Swisspearl

Lausanne is our flat, harmoniously round planter. The wide base and the low height ensure high stability.

Ø 70cm × H 23cm

Ø 90cm × H 30cm

Natural grey, Anthracite

Custom Colour



# Bonsai

# Lausanne

Design by Patrick Schöni

Aladin is the planter for your big plant needs. The two-part design with removable ring simplifies repotting later. A water overflow with water reservoir ensures a long-lasting water supply for the planting.

Ø 112cm × H 59cm

Ø 138cm × H 73cm

Ø 165cm × H 87cm

Anthracite ●

Custom Colour ●



Design by Michel Bruggmann

The Bench by industrial designer Michel Bruggmann invites you to rest and pause in style. With its simple design, gently rounded corners and smooth surface, it blends into any environment - indoors and outdoors.

Dimensions per element

L 160cm × B 45cm × H 46cm

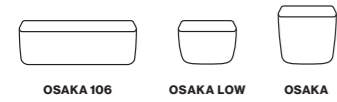
Anthracite ●



# Aladin

# The Bench

Strong, robust - and yet light and delicate. The Osaka planter with its rounded corners is available in ten different sizes. The planters offer space for everything from small herb beds on the balcony to flower compositions in the garden.



Osaka 106	Osaka
L 106cm × B 36cm × H 36cm	L 35cm × B 35cm × H 36cm
Osaka Low	L 44cm × B 44cm × H 45cm
L 44cm × W 44cm × H 36cm	L 53cm × B 53cm × H 55cm
L 53cm × W 53cm × H 40cm	L 70cm × B 70cm × H 54cm
L 70cm × W 70cm × H 45cm	L 90cm × B 90cm × H 70cm
L 90cm × W 90cm × H 50cm	Natural grey, Anthracite
	Expression
	Natural
	Custom Colour

Kyoto Low	Kyoto
Ø 44cm × H 36cm	Ø 35cm × H 36cm
Ø 53cm × H 40cm	Ø 44cm × H 45cm
Ø 70cm × H 45cm	Ø 53cm × H 55cm
Ø 90cm × H 50cm	Ø 70cm × H 54cm
Ø 120cm × H 65cm	Ø 90cm × H 70cm
	Ø 120cm × H 90cm
	Natural grey, Anthracite
	Expression
	Natural
	Custom Colour

Elegance combined with classic design - that is the Kyoto planter. Available in 11 different sizes, it skilfully showcases perennials, shrubs and small trees.



# Osaka

# Kyoto

Design by Swisspearl

Sessanta, sixty-six. With a width and height of 66 cm, this planter forms a harmonious square when viewed from the front. Sessanta can be optimally combined with the Trenta planter.

L 66cm × W 33cm × H 66cm

Natural grey, Anthracite

Custom Colour



Design by Swisspearl

Trenta, thirty-three. The slender counterpart to Sessanta. Classic, square - this is how the planter presents itself. Versatile in use, it skilfully sets the scene for plants with its simple form.

L 33cm × W 33cm × H 66cm

Natural grey, Anthracite

Custom Colour



# Sessanta

# Trenta

Rectangular, square or round. Delta is available in many different shapes and sizes - to suit your individual requirements. Set accents with different shapes and colours.

<b>Delta 35</b>	L 100cm × W 45cm × H 45cm	L 80 cm × W 55cm × H 60cm
L 80cm × W 30cm × H 35cm	L 120cm × W 45cm × H 45cm	L 100cm × W 55cm × H 60cm
L 100cm × W 30cm × H 35cm	L 140cm × W 45cm × H 45cm	L 120cm × W 55cm × H 60cm
<b>Delta 45</b>	Ø 50cm × H 45cm	L 140cm × W 55cm × H 60cm
L 45cm × W 45cm × H 45cm	Ø 75cm × H 45cm	Ø 75cm × H 60cm
L 60cm × W 60cm × H 45cm	Ø 100cm × H 45cm	Ø 100cm × H 60cm
L 80cm × W 80cm × H 45cm	<b>Delta 60</b>	Natural grey, Anthracite <input type="radio"/> <input checked="" type="radio"/>
L 100cm × W 100cm × H 45cm	L 60cm × W 60cm × H 60cm	Custom Colour <input type="radio"/>
L 60cm × W 45cm × H 45cm	L 80cm × W 80cm × H 60cm	
L 80cm × W 45cm × H 45cm	L 100cm × W 100cm × H 60cm	

Delta 25's small size makes it ideal for urban gardening in limited spaces. The elongated design provides excellent protection against frost, allowing flowers, herbs and vegetables to thrive.

<b>Delta 25</b>
L 80cm × W 25cm × H 25cm
L 100cm × W 25cm × H 25cm
<b>Delta 25 Saucer</b>
L 83cm × W 28cm × H 6cm
L 103cm × W 28cm × H 6cm
White, Anthracite <input type="radio"/> <input checked="" type="radio"/>



# Delta

# Delta 25

Design by Swisspearl

Timeless design that resists frost and gives flowers and herbs a new home. Made of breathable and moisture-regulating fibre cement, our Balconian "Eternit" model is particularly suitable for urban gardening, as they defy wind and weather.

**Balconia**

L 40cm x W 17cm x H 17cm

L 60cm x W 17cm x H 17cm

L 80cm x W 17cm x H 17cm

L 100cm x W 17cm x H 17cm

**Balconia Untersetzer**

L 43cm x W 20cm x H 3cm

L 63cm x W 20cm x H 3cm

L 83cm x W 20cm x H 3cm

**Balconia Decor**

L 40cm x W 17cm x H 17cm

L 60cm x W 17cm x H 17cm

L 80cm x W 17cm x H 17cm

L 100cm x W 17cm x H 17cm

**Balconia Reservoir**

L 60cm x W 17cm x H 20cm

White, Anthracite



# Balconia

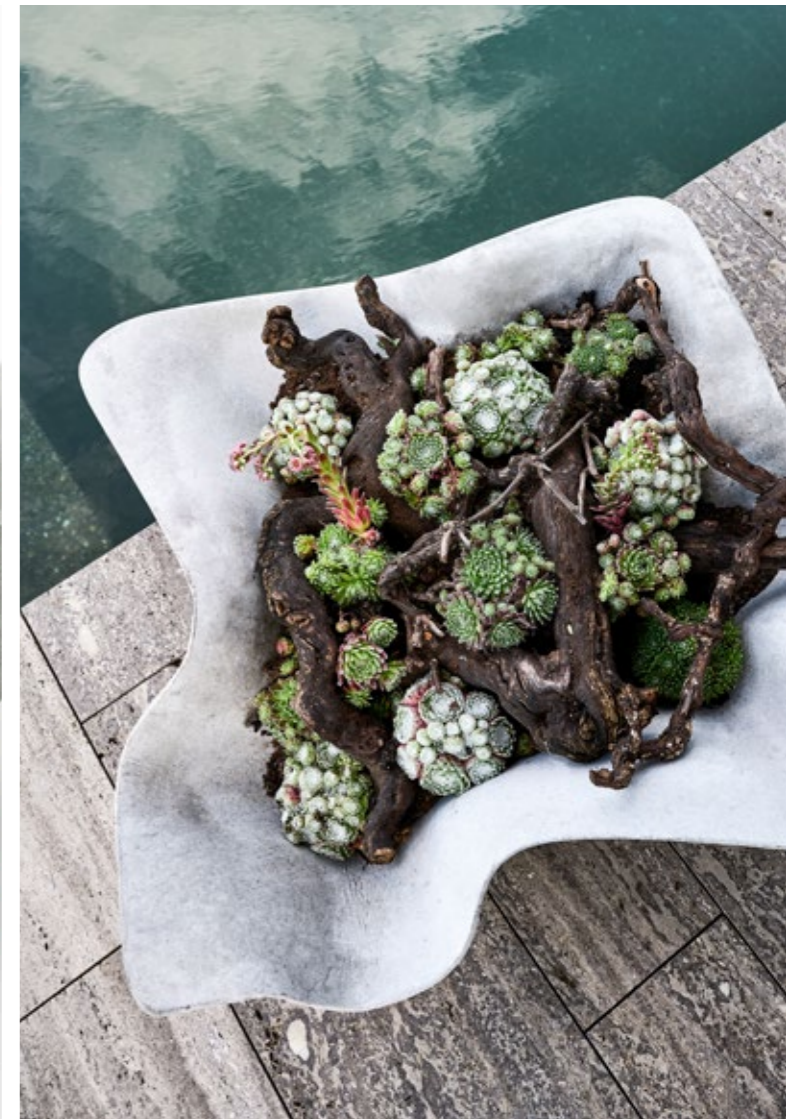
Design by Willy Guhl

The Biasca planter, also called Elephant's Ear, captivates with its organically inspired form. It received the "Good Form" award from the Swiss Werkbund in 1952. Today it is one of the Swiss design classics.

Ø 93cm x H 32cm

Natural grey

Custom Colour



# Biasca

Design by Michel Charlot

The design of the Porto trio - table, side table and stool - impresses with a concise design language and maximum reduction. The trio not only looks good outdoors - Porto also makes a strong statement indoors.

**Table**

Ø 71cm × H 23cm

**Side Table**

Ø 46cm × H 23cm

**Stool**

Ø 36cm × H 42cm

Natural grey ●



Design by Rainer Mutsch

The Dune lounge chair consists of four elements that can be arranged as individual pieces or combined. With its rounded, soft edges, the Dune design by Rainer Mutsch creates an exciting 3D effect.

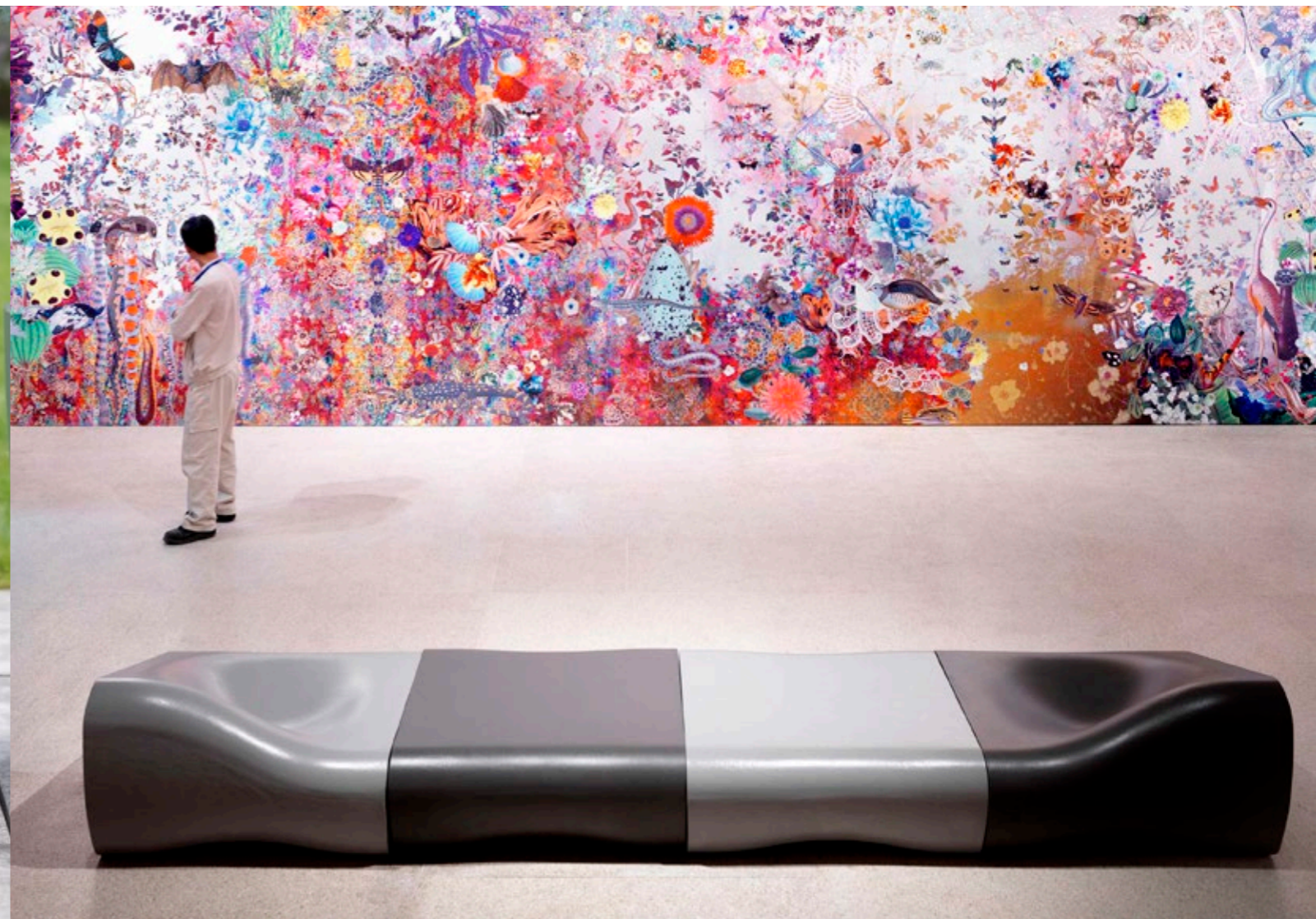
**Left, Right, Middle**

L 96cm × W 95cm × H 60cm

**Table**

L 96cm × W 89cm × H 36cm

Anthracite, Titan ● ●



# Porto

# Dune

Design by Thing Design

The design of the multifunctional Cheers shelving system pays homage to the famous Swisspearl wave. Originally designed to store wine bottles, you can store anything from logs to towels in it.

L 37.5cm x W 25cm x H 30.5cm

Natural grey, Anthracite



Design by Michel Bruggmann

With a height of 65 cm, the tall and narrow design of Geisha with timeless, gentle curves is the ideal planter for deep-rooted plants.

Ø 44cm x H 65cm

Natural grey, Anthracite

Expression

Natural

Custom Colour



# Cheers

# Geisha



Design by Kevin Fries and Jakob Zumbühl

A fibre cement slab draped like a tablecloth: the incredible stability of hardened fibre cement allowed the designers to add a touch of magic to their design. The side table is stable even without a frame and seems to float in the air.

Ø 45cm × H 43cm

Ø 58cm × H 36cm

Natural grey, Anthracite ●●



Design by Nicolas Le Moigne

Inspired by the malleability of fibre cement, designer and lecturer Nicolas Le Moigne designed these elegant and resilient masterpieces with his students. The central fold gives the objects stability while ensuring a certain lightness.

**Chair**

L 44cm × W 32cm × H 44cm

**Table**

L 70cm × W 49cm × H 27cm

Natural grey, Anthracite ●●



# Hocuspocus

# Ecal

Design by Carmen Humbel and Thomas Geiger

High, round and widening conically upwards - this is how the Alto planter presents itself. It is the perfect vessel for deep-rooted plants such as roses.

Ø 39/26 cm × H 55 cm

Gris naturel, Anthracite

Custom Color

Design by Swisspearl

Round or square. The frost-resistant trays make watering the plants much easier and protect the substrate from getting wet and dirty. Thanks to an optional interior coating, the indoor use is possible without any problems.

**Quadratisch**

L 30 cm × W 30 cm × H 4,5 cm

L 40 cm × W 40 cm × H 5 cm

L 45 cm × W 45 cm × H 5 cm

L 62,5 cm × W 62,5 cm × H 5 cm

**Rund**

Ø 30 cm × H 4,5 cm

Ø 35 cm × H 4,5 cm

Ø 40 cm × H 5 cm

Ø 46 cm × H 5 cm

Ø 52 cm × H 5 cm

Ø 62,5 cm × H 5 cm

Natural grey, Anthracite



# Alto

# Saucer

# We also offer Customized.

There are some incredibly bizarre life forms. They are tiny and survive at -200 °C, look like withered leaves, live on poisonous arsenic or live on poisonous arsenic or wear luminous fishing rods on their heads. Life manifests itself in many different ways: bizarre, opulent, colourful, monochrome, delicate, round, angular - and in all the forms in between. Nature is diversity and uniqueness. Perfectly adapted to the conditions. It is our greatest inspiration. Don't be restricted in the design of gardens, terraces or squares.

Special production of a two-piece design planter for Kalou Dubus (Gallery Desprez Breheret, Paris)



**Volpatohatz**  
Special design for a  
planted facade in Birs-  
felden.

Swisspearl allows you to bring custom products, solutions and designs to life - based entirely on your own ideas. We support you with our expertise and technical know-how from consultation through to production. Many different and exciting projects have already been completed - whether for and with product designers, architects, companies or the public sector. With us and with fibre cement, almost anything is possible.

# Custom Made

**ZHAW Winterthur**  
Interior greening of the new  
campus with a Delta special  
production in custom size.





**Yellow-bellied toad in the Spotlight** - A species of frog, about four to five centimeters in size, threatened with extinction. The disappearance of habitats such as puddles and small streams is endangering the survival of the small yellow-bellied sounder, prompting nature conservation organisations to take action. In cooperation with Naturnetz, Swisspearl has developed an organically shaped container made of fiber cement. Due to the nature of the material, the tub can be used in nature reserves without any problems.



**ZHAW Winterthur**  
Interior greening of the new campus with a Delta special production in custom size.

# Custom Colours

Colours that match the individual design?  
It's no problem with Custom Colours by Swisspearl.

## Custom Colours

Plant pots in the company colours? A specific colour concept for the design of gardens, terraces and public outdoor spaces? Fancy individual splashes of colour in the outdoor area? Our custom colours range from classic anthracite to opaque colours and soft tones in a wide selection of RAL and NCS colours.

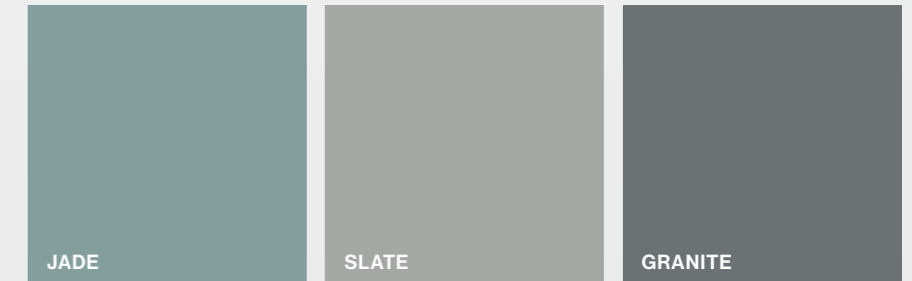
## Classic

With natural grey and the classic anthracite, we offer two timelessly beautiful standard colours. The texture of the fibre cement is gracefully accentuated to add a touch of simplicity and elegance to every garden and terrace.



## Natural

Three soft shades - Jade, Slate and Granite - bring out the fibre cement structure beautifully despite their colourfulness. The three Natural Colours have a subtle yet modern effect and deservedly allow the plants to shine.



## Expression

With our Expression Colours, we offer five expressive earth tones that blend in perfectly with the surroundings. The matt glaze beautifully sets off the rough feel of the natural fibre cement and accentuates every plant well.



# Standard Colours

Interior planting brings nature indoors and integrates it as part of the interior design. Plants in the workplace, in private areas or in public buildings help to create more inviting spaces. Natural materials and plants have a proven positive effect on our health and wellbeing.

**Design collaboration  
with Creaplant for  
Airport Zurich AG**

With "The Circle", a small city has been created at Zurich Airport. Here, office space, hotels and shopping are combined with culture and gastronomy. For this project, Swisspearl produced 663 custom-made planters in collaboration with Creaplant.



# Indoor Greening

Not only do plants help improve air quality, they can also be used to create aesthetically and harmoniously furnished interiors that enhance our performance and provide a relaxing environment. Our planters can be individually adapted to your specific needs and interior and are 100 % waterproof thanks to a durable inner coating and a closed bottom hole.



#### **Irrigation**

Fibre cement is a breathable material that automatically regulates humidity. All planters have drainage openings at the bottom that must not be blocked so that water can run off and not freeze in winter. A clay shard is a proven and simple aid for this. Place it over the drainage hole. Some large pots also have a water reservoir and overflow, which significantly reduces the frequency of watering.

#### **Perfect layering**

To prevent waterlogging, first fill one third of the planter with expanded clay or coarse river pebbles. Then place a water-permeable fleece mat and place the plants on top of this. Then fill the planter with soil. Keep a rim of about 5 cm free to prevent the water from overflowing.

#### **Ideal location**

Choose a suitable spot for each plant with the right light and temperature conditions and a level base. Indoor planters are best placed on saucers so that overflowing water cannot damage the soil.

#### **Repotting**

Every few years a plant needs fresh soil, ideally in spring. To do this, remove the plant and its root system from the container, remove the old soil and fill in with fresh soil.

#### **Cold protection**

Due to the high final volume of the planters, the roots of the plants are well protected against frost. If you want to protect the planters additionally in winter, use a fleece or natural materials, never plastic, as this can form permanent white spots.

# Planting advice



# Cleaning

## **Natural patina**

The natural components of Swisspearl fibre cement ensure that microorganisms or spore plants such as algae or moss feel at home on the natural surface. This creates an almost artistic patina over time. However, deposits or efflorescence can be easily cleaned with the help of the following cleaning instructions.

## **Cleaning agents**

Cleaning vinegar (9.5%) or a strong descaling agent (e.g. Durgol Forte). If necessary, a hand brush can be used for cleaning. To avoid damaging the material, the use of high-pressure or industrial cleaners should be avoided during cleaning. The suitability should first be tested on an inconspicuous area.

## **Cleaning of coated products**

Treat the contaminated area or light lime efflorescence with plaster vinegar or a strong decalcifying agent and rinse with plenty of water. Make sure that vinegar cleaner does not get on bare metal parts and does not dry up. Cleaning should not be carried out with hot water and not on heated and sunlit surfaces.

## **Cleaning of natural grey products**

Slight lime efflorescence on natural grey products will be specifically removed by the weather over time. Contamination on uncoated objects should always be cleaned over the entire surface and not partially, as possible colour differences may occur.





# Natural. Consistent. Handmade.

External beauty is, of course, in the eye of the beholders. In collaboration with designers, we strive to achieve the purest and most timeless aesthetics possible because this corresponds to our concept of sustainability. Natural raw materials, high-quality work and responsibility towards people and the environment are the hallmarks of all our products. This applies not only to elegant planters, but to all Swisspearl building materials.

# Material Fibre cement

## Sustainable material

With these properties, fibre cement has made the leap from facade and roof panel material to design material. The extraordinary durability and natural components make our fibre cement a sustainable material. It is weather-resistant, winter-proof and very stable - a perfect symbiosis for outdoor vessels and objects.

## Materiality

Natural raw materials and an enduring inventive spirit form the recipe for success of a product that is over 100 years old and has never gone out of fashion. In the hand, fibre cement shows its homogeneous materiality and its strength. To the eye, it presents itself with its unique character, its natural texture and the varied colours that are matched to the material.

## Recipe for success

With expertise, precision and craftsmanship, the elements cement, pulp, water, recyclable reinforcing fibres, pigments and air are transformed into unique garden and design products. In the process, the raw materials are combined into a raw mass according to our own recipe. This is carefully wound, pressed, cut, dried and dyed under constant quality control. But only when the material meets the highest standards in all respects is it Swisspearl fibre cement.

## Regional raw materials

The short transport routes of the regional raw materials are environmentally friendly. In addition, the production of fibre cement requires little energy compared to other building materials. With its long service life, fibre cement improves the ecological and economic balance.



The opening of the hand moulding shop at the Payerne plant in 1957 laid the foundation for the free design of designer objects and planters. As a pioneer in the production of fibre cement panels for facades and roofs, Swisspearl sought collaboration with architects and designers, bridging the gap between design and industry.



# Manufactory



# People shape Swisspearl.



**Martin Mostböck**

Martin Mostböck has received numerous national and international awards and nominations for his work. His works and designs have been shown in countless exhibitions throughout Europe, Asia, the Middle East, North America and Australia and belong to the most renowned museum collections in the world, such as the Museum of Arts and Design/New York.



**Michel Bruggmann**

Michel Bruggmann works as an architect and industrial designer in the Eicherbruggmann office in Basel, which was founded in 1999. By using proven materials in a new context, Eicher and Bruggmann create innovative products and architecture. Well thought-out concepts break through common thought patterns and provide versatile and novel possibilities for use.



**Humbel und Geiger**

Carmen Humbel and Thomas Geiger, both graduate architects ETH/SIA from Zurich. Humbel worked at the Architecture Museum in Basel as well as at the Architecture Forum Zürich as managing director. Geiger previously spent four years at Santiago Calatraca and is a founding partner of Arndt Geiger Herrmann AG in Zurich.



**Patrick Schöni**

Patrick Schöni is a graduate engineer in horticulture HTL/FH and was the co-owner of the Gardens Gesaemtloesungs GmbH planning office until 2019. As a lecturer and expert, he now lectures at various educational institutions for professional development in the subjects of design, garden planning and plant use.



**Fries and Zumbühl**

Kevin Fries and Jakob Zumbühl have been designing and bringing various design products to life since 2003. They have received various awards such as the Reddot Design Award for the Tetris designer frame for Swisspearl and much more.



**Michel Charlot**

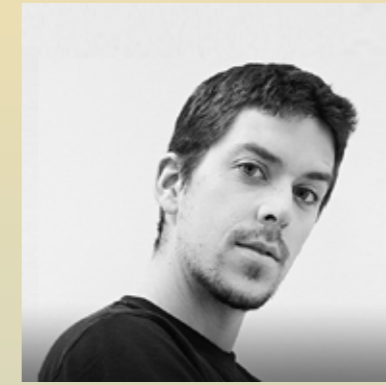
After graduating from ECAL / School of Art and Design in Lausanne, the Swiss industrial designer worked for Jasper Morrison Ltd. Since 2011 he has been an independent product developer for companies such as Swisspearl, Vitra and Kettal. Since January 2013, he has been teaching industrial design at ECAL/Hochschule für Kunst und Design Lausanne in Switzerland and at Tama Art University in Tokyo, Japan.



**Thing Design**

Thingdesign consists of Cédric Facchin (Dipl. Designer FH), Marco di Paolo (Dipl. Innenarchitekt FH) and Michael Abegg (Hochbauzeichner / Möbelschreiner). Since 2009 the three dynamic young Swiss designers form a team and create together innovative lifestyle products for international design companies.

Hardly any other material offers as many creative possibilities as fibre cement. Maximum design flexibility, the material's purity and authenticity as well as its incomparable, beautiful feel give plant pots and design objects made of Swisspearl fibre cement their unique, tactile appearance. It is no coincidence that a growing number of designers are creating unique objects using fibre cement for a stylish finish



**Vladimir Jaccard**

Vladimir Jaccard studied at the ECAL in Lausanne and is co-founder of the office JALE-Design in the Lausanne region. He has worked for Swiss Watch Company in the fields of instruments and timekeeping, among others.



**Julia von Sponeck**

Julia von Sponeck studied architecture and design at the Stuttgart Art Academy and the University of North London between 1992 and 2000. She worked for several years as an architect and designer for internationally renowned offices in London and Berlin. Currently working at Hermes International as an architect.



**Rainer Mutsch**

Rainer Mutsch studied furniture design at Denmark's Design Skole Copenhagen, product design at the Berlin University of the Arts and completed his studies in Industrial Design (Prof. Paolo Piva) at the University of Applied Arts Vienna. Rainer Mutsch then worked as a designer with Werner Aisslinger in Berlin before opening his own design studio in Vienna in 2008, focusing on product design.



**Willy Guhl**

After completing his apprenticeship as a cabinetmaker, he studied at the School of Applied Arts in Zurich, where he later worked as a lecturer and director himself. In 1939 he founded his own studio in Zurich. Guhl was a co-founder of the Association of Swiss Interior Designers and the Association of Swiss Industrial Designers. He developed products for renowned companies such as Dietiker + Co, Aebi and Swisspearl (Schweiz) AG.



**Savioz Fabrizzi**

Savioz Fabrizzi Architectes, based in Sion, always seek the balance between spatiality and the expression of materials. In doing so, they reveal the intrinsic qualities of a building and a built heritage.



**Nicolas Le Moigne**

Nicolas Le Moigne already designed objects during his studies at ECAL, with which he was able to celebrate his first great successes. In 2007 he opened his own design studio in Lausanne. For over 15 years he has been teaching at ECAL in Lausanne as Head of Master in Design for Luxury & Craftmanship.



**Sternform**

Andrea Grossfuss studied industrial design in Hamburg and Olaf Kiessling studied product design in Stuttgart. In 2003 they jointly founded the office Sternform Produktgestaltung. They specialise in the design of furniture and accessories.

# Endlessly

We don't just design space - we design our future. With a durable, natural, extremely malleable material that makes anything possible. Your ideas and our future. Join us. Enjoy the design, the moment, nature. After all, there is room for infinite joy in a lifetime.

happy.







# SWISSPEARL

**Swisspearl Schweiz AG**

CH-8867 Niederurnen  
+41 55 617 11 11  
info@ch.swisspearl.com

CH-1530 Payerne  
+41 26 662 91 11  
service-client@ch.swisspearl.com

**swisspearl.ch**  
**swisspearl-gardenanddesign.ch**

Member of the  
Swisspearl Group

