

KARVE

# KARVE

Karve is a flatseam panel done with a level of precision not traditionally afforded these products. Our automated fabrication allows for accuracy, efficiency, and timely production on projects of any size and scope. From our standard Zinc systems, to the Zahner finish options, from copper to our TEKKō™ ZAM®, we offer unique and beautiful finishes that meet most demands of design, quality and budget. As our panels are also modifiable, interfacing with windows and other materials or adjusting to site conditions simplifies progress, supply, and installation. In other the words, the material is ready when you need it. Karve is the step the market has demanded of its most traditional panel.

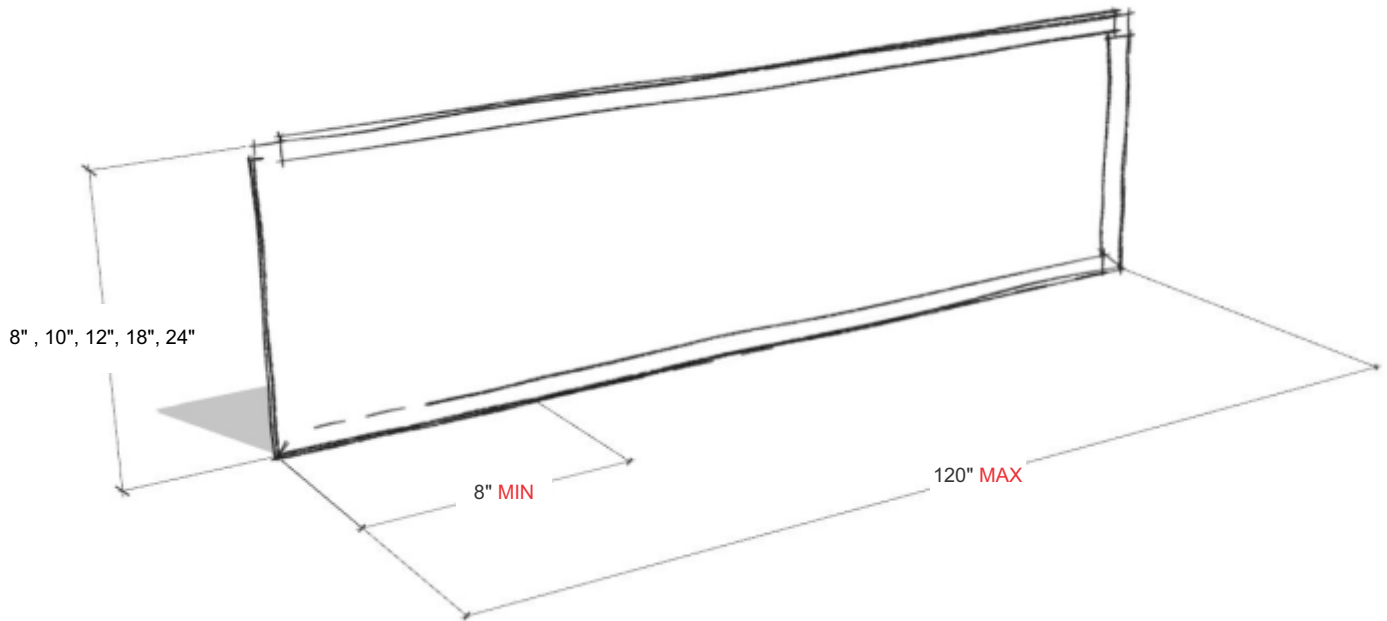




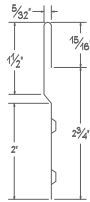
# KARVE

Engineered FL Panel Systems

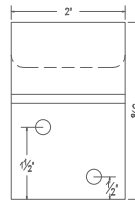
## Standard Dimensions



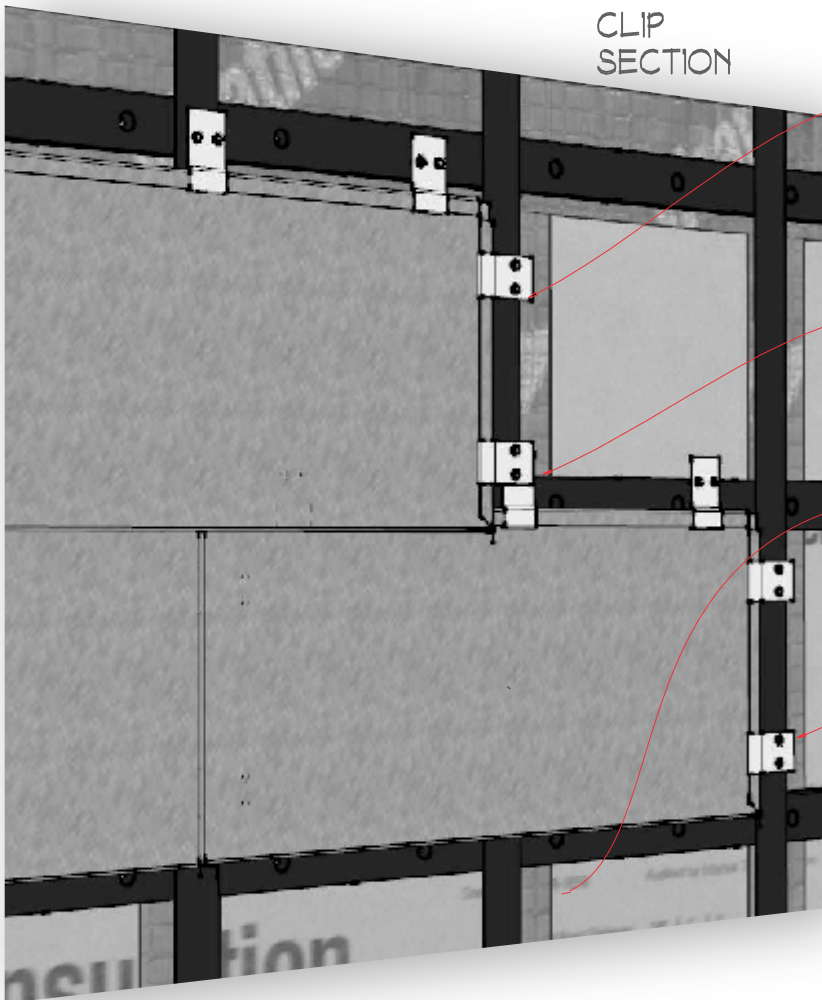
## Engineered FL Panel Systems



CLIP SECTION



2" CLIP



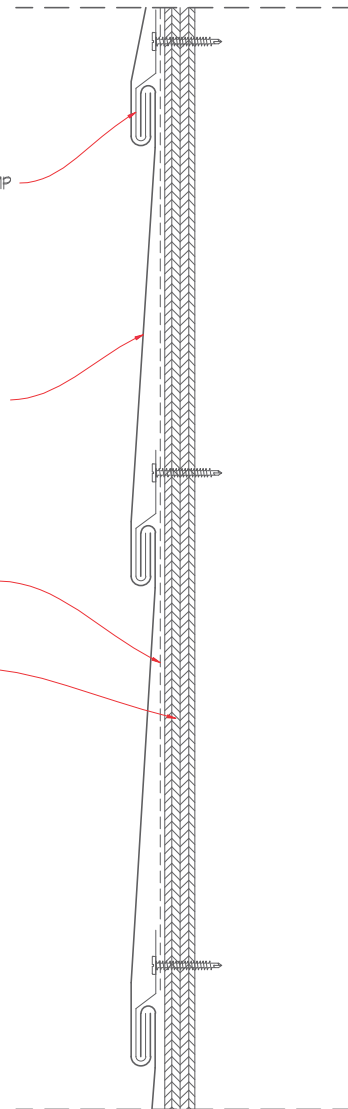
GALVANIZED CLIP AS REQD

1.0MM ZINC FLATLOCK

UNDERLAYMENT PER PLAN

SHEATHING

GALVANIZED CLIP AS REQD





# KARVE

KARVE FlatSeam Panels offer a modern and elegant cladding solution. These panels can be oriented horizontally, vertically or angled with step locking hidden hems, clips and fasteners. The flatseam panels use a simple interlocking fold on all four sides - two in and two out allowing. This allows for quick installation and modification to meet the challenges and timelines of todays projects.

KARVE pre-formed panels are ideal for all applications up to approximately 100' (30m). Buildings that exceed these dimensions will need additional engineering and consultation.

## PROPERTIES

Dimensions: Standard Exposed panel heights are 8" (203.2mm), 12"(304.8mm), 16"(406.4mm) & 24" (609.6mm)  
Max panel length is 120" (3048mm)  
Min 8" (203.2mm) - the length is customizable between these dimensions

Materials: Zinc, Copper, aluminum, or TEKko™ Steel- all raw materials are sourced with an emphasis on waste reduction due to the available coil heights (Note: the wider panels are available but may result in distortion or oil-canning).

## ASSEMBLY CHARACTERISTICS OF THIS TECHNIQUE

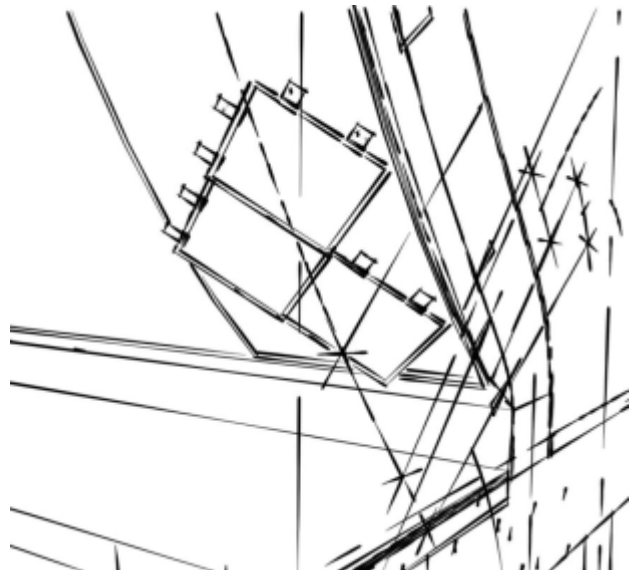
- The panels are installed on minimum 1/2" (15mm) plywood, recommend 3/4" (19mm).
- A WRB building paper must be laid between the panel and the plywood.
- A continuous ventilation air gap should be left clear behind the plywood. However, with the inclusion of Proctor vapor membrane on the outside, the plywood -if wet- can dissipate moisture through the outer face and negate the gap at the back. This will then allow for plywood to be fixed directly to a stud-frame.
- Recessed joints with concealed fastenings.

## THE SYSTEM

Our factory formed panels, custom sized into rectangular, square or diamond shapes, come integral with a interlocking hems on all edges. The installation, by engaging the lower edge of each panel in the upper edge of the panel below and mechanically attached to supports using concealed clips located under the upper edges of panels, is quick and simple. Only requiring readily available and standard tools.

The system includes a full range of clips, fasteners, flashings and finishing elements. The distance between the concealed clips are determined by the wind loading but typically are spaced at 12"(300mm) centers.

All materials supplied are non- combustible and have been tested to AS 1530.3-1999 Method for Fire tests on Building Materials, Components and Structures Part 3: simultaneous Determination of Ignitability, Flame Propagation, Heat release and Smoke Release.

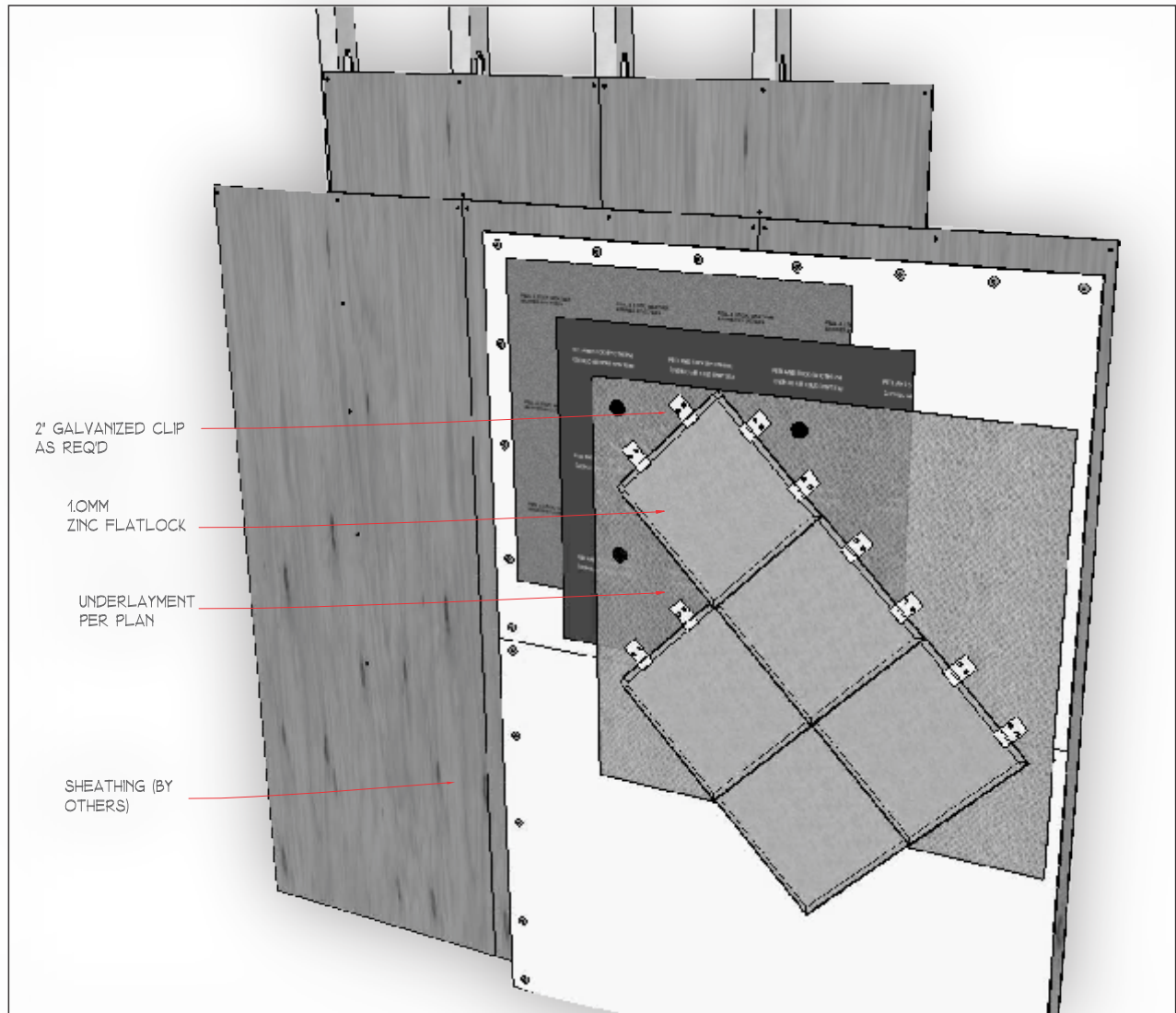






## Engineered FL Panel Systems

### Diamond



KARVE

Engineered FL Panel Systems

FINISHES

ZINC

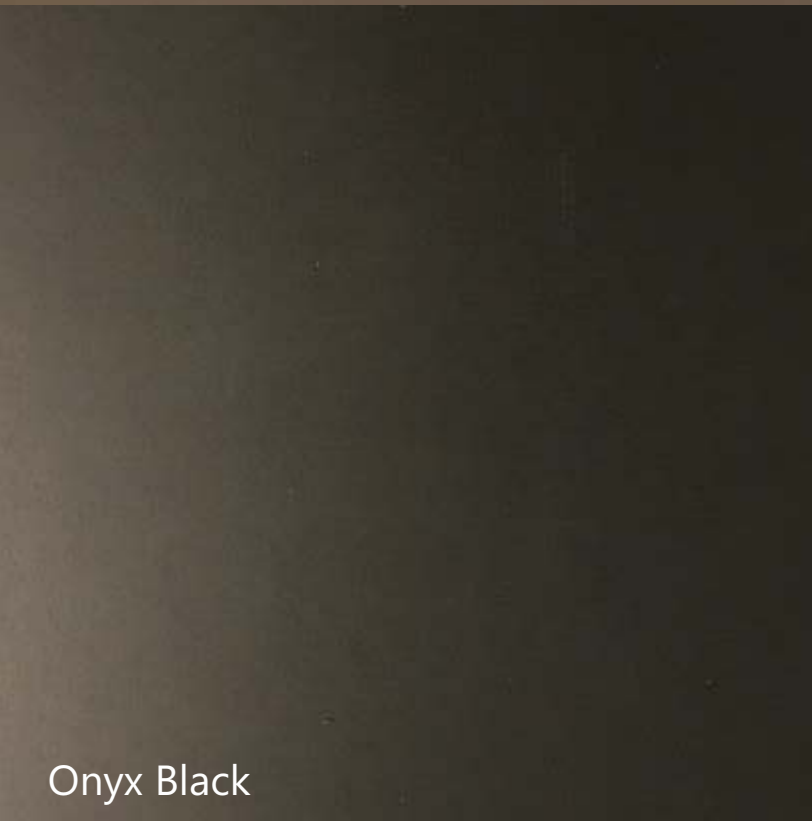
Glacier Grey Zinc




Sanoma Red



Gannett Green



Onyx Black



Ocean Blue



KARVE

Engineered FL Panel Systems

ARTISAN FINISHES

ZINC



Raono™



Hunter™



Baroque™

1:1

Artisan Zinc  
Finishes by

**ZAHNER®**

KARVE

Engineered FL Panel Systems

FINISHES

TEKKō™ Steel®

Kuro

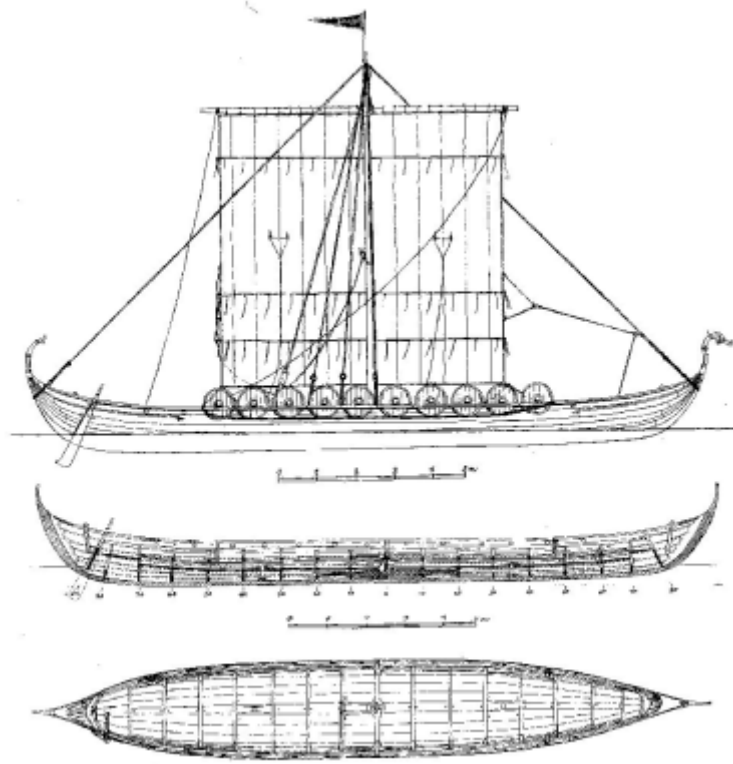
KARVE

Engineered FL Panel Systems

FINISHES

TEKKō™ Steel ®

Hai hiro



KARVE<sup>TM</sup>